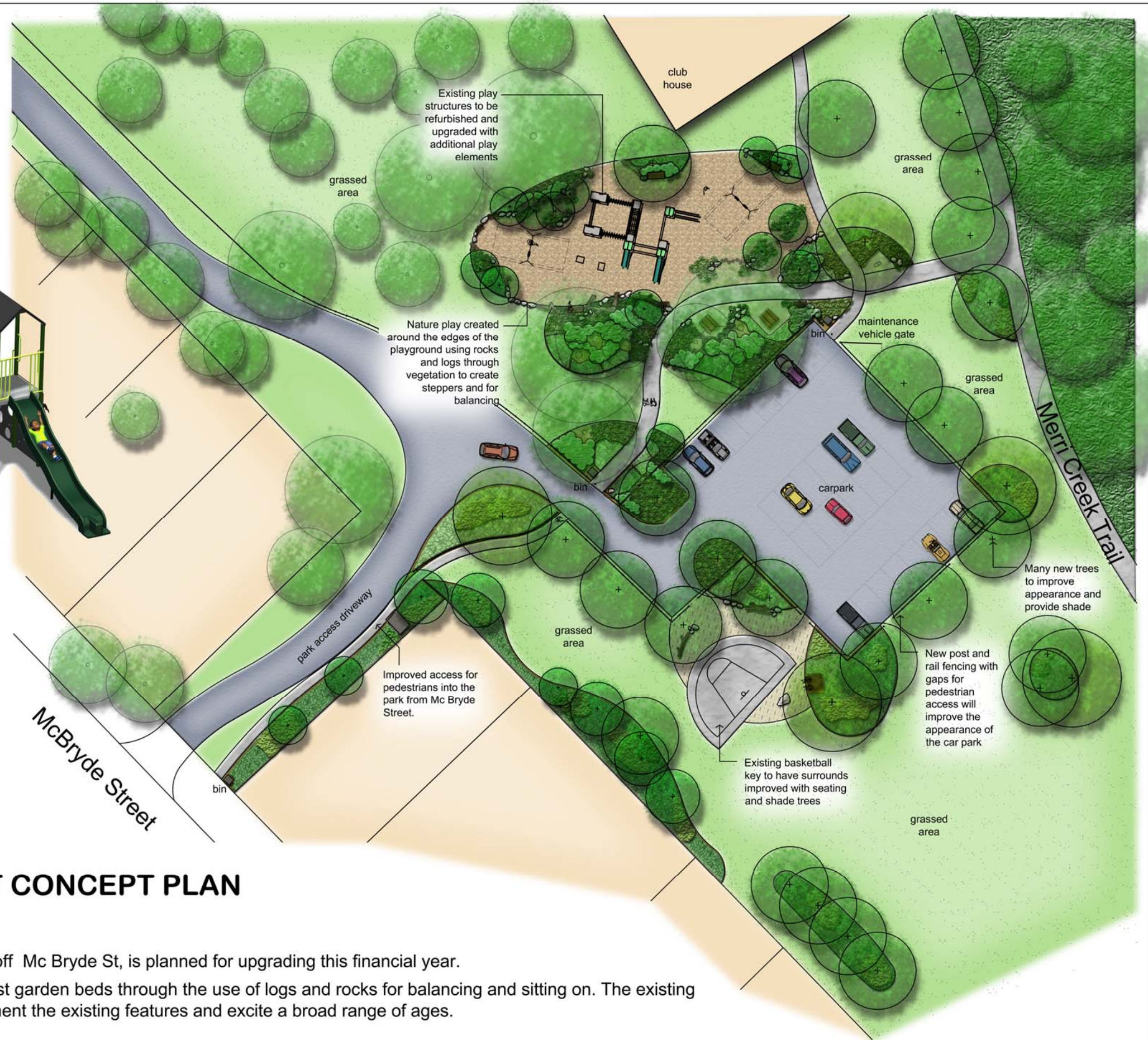




Nature Play



MOOMBA RESERVE, FAWKNER - DRAFT CONCEPT PLAN PLAYSPACE UPGRADE 2017 / 2018

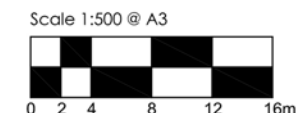
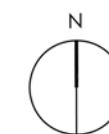
This playground at Moomba Reserve, Fawkner, accessed via the entry off Mc Bryde St, is planned for upgrading this financial year.

This upgraded play space will incorporate a blend of nature play amongst garden beds through the use of logs and rocks for balancing and sitting on. The existing play equipment will be refurbished and new elements added to complement the existing features and excite a broad range of ages.

Extra seating and a new picnic tables surrounding the main playground and basketball key to the south, will provide a place to sit and enjoy the space. New fencing along the perimeter of the roadway and car park will improve the appearance and create a safer play environment for families to enjoy.

Residents and the wider community are invited to submit feedback on the proposals shown in this concept plan. Please contact **Wendy Skala, Landscape Architect**, at Moreland City Council to provide comment or ask for more information. Email wskala@moreland.vic.gov.au or telephone **8311 4392**. All submissions must be made by close of consultation on Friday 13th October, 2017. The final concept plan is subject to budget provision and any feedback received.

Above images are indicative only



Moreland City Council