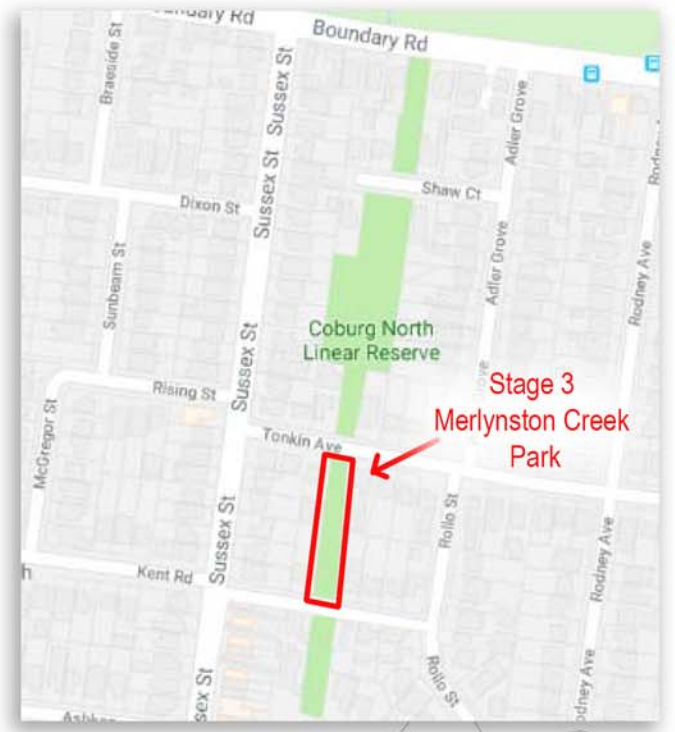
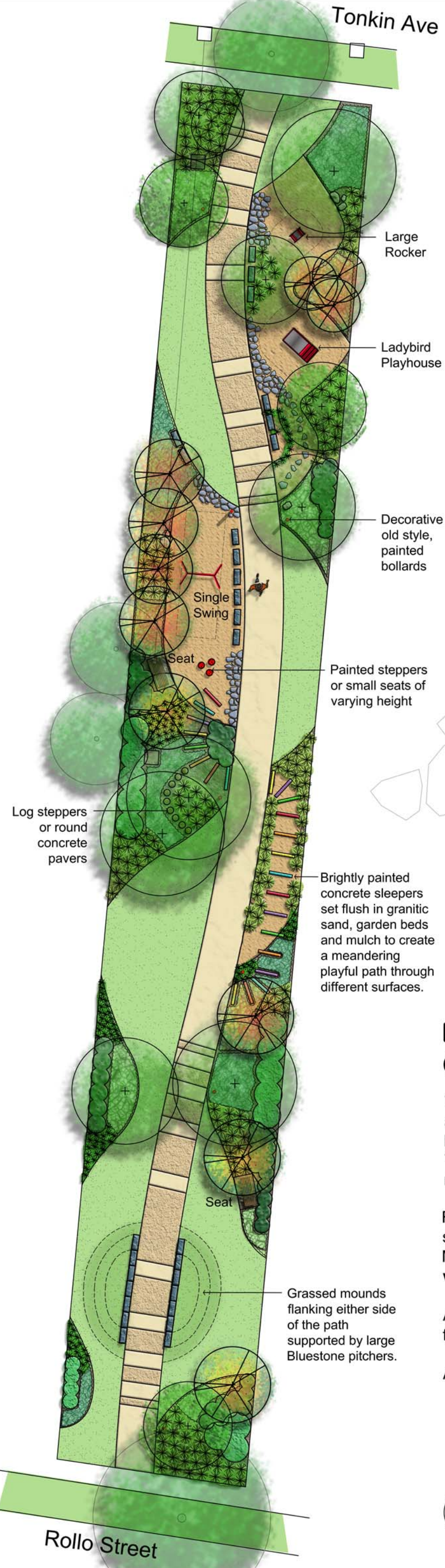


Tonkin Ave



Legend

- existing trees to be retained
- proposed evergreen tree
- proposed deciduous trees for summer shade and winter sun
- shrubs for specimen and screening
- grasses and strap-leaved plants
- ground-cover plants
- rectangular Bluestone pavers for informal seating and edging
- Painted Heritage Bollards
- rocks / informal seating
- bluestone crazy pavers
- round concrete pavers or log steppers
- painted concrete sleepers used as pavers
- exposed aggregate and coloured concrete shared path
- soft-fall mulch
- 'forest floor' (organic) mulch
- grassed areas



Painted steppers or small seats of varying height

Brightly painted concrete sleepers set flush in granitic sand, garden beds and mulch to create a meandering playful path through different surfaces.

Grassed mounds flanking either side of the path supported by large Bluestone pavers.



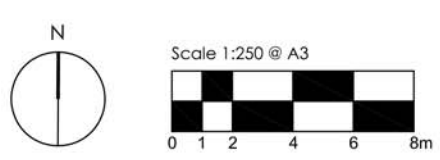
MERLYNSTON CREEK PARK, STAGE 3 - DRAFT CONCEPT PLAN - PLAY MOMENTS 2018

This upgrade proposes to incorporate a blend of sensory play over the ground plane and amongst garden beds through the use of a variety of paving and hard materials for balancing, standing and sitting on as well as some new, contemporary play equipment. These new elements will activate the space and provide better access through this reserve with small play moments to excite children on their journey through it.

Residents and the wider community are invited to submit feedback on the proposals shown in this concept plan. Please contact **Wendy Skala, Landscape Architect**, at Moreland City Council to provide comment or ask for more information. Email wskala@moreland.vic.gov.au or telephone 8311 4392.

All submissions must be made by close of consultation on Friday 20th April, 2018. The final concept plan is subject to budget provision and any feedback received.

All images are indicative only



Rollo Street