

Moonee Ponds Creek Trail:

- Is a 25 km, largely off-street shared path following the Moonee Ponds Creek. It runs through the cities of Melbourne, Moonee Valley, Moreland and Hume. A 2.5 km section of the path in Gowanbrae runs through the City of Moreland.
- Links to the Capital City Trail and provides connections to many inner city suburbs.
- Is a route in the Metropolitan Trail Network and Principal Bicycle Network.
- Runs through land managed by Melbourne Water and TransUrban for drainage and freeway uses.

Role of the Moonee Ponds Creek Trail in the bicycle network

The Moonee Ponds Creek Trail is an important cycling route for residents in the western half of the municipality. It includes areas of high recreational cycling amenity north of Bell Street, and its southern sections form an important commuter cycling route for residents of Essendon, Moonee Ponds and Brunswick West.

The Moonee Ponds Creek Trail is a mix of meandering paths with high quality recreational cycling values, and a highly modified urban landscape that includes drains and a major freeway. However, this mix means it has industrial looking sections that are less appealing to recreational cyclists, and rambling disconnected sections, which make it difficult to use for commuter cyclists.

The Moonee Ponds Creek Trail includes several features that limit its greater use by Moreland residents. These include:

- Limited access points onto the path from Moreland. The Moonee Ponds Creek lies in a steep river valley, and the trail lies on its western bank. Moreland residents need to cross hills and bridges to access the trail.
- The Moonee Ponds Creek does not provide year-round access. Like the Merri Creek Trail, parts of the Moonee Ponds Creek Trail are subject to flooding.
- Discontinuity in Essendon. The Moonee Ponds Creek Trail runs along the Essendon Road for a section between Albion Street and Moreland Road. This significantly reduces the appeal of the trail as an off-street recreational cycling route.

Delivering upgrades to the Moonee Ponds Creek Trail

Upgrades to the Moonee Ponds Creek Trail will seek to:

- Better manage flood risks by upgrading the path in stages to meet the standards outlined in *Melbourne Water Shared Pathways Guidelines*.
- Improve user safety by realigning the path to reduce gradients and sections with poor visibility.
- Improve open space amenity by creating a path running through a continuous open space corridor.
- Improve access to the path for residents of Oak Park by constructing new access links to Oak Park Sports Centre, JP Fawkner Reserve and existing shared paths north of Devereaux Street.
- Support greater use of the Moonee Ponds Creek Corridor as a cycling for transport commuter route by:
 - Creating an *express route* that bypasses a looping section of the path, between Hope and Reynard Streets.
 - Improving access for Brunswick West residents by constructing a new access bridge in the vicinity of Dawson and Victoria Streets.
 - Linking the Moonee Ponds Creek Trail to Glenroy and Broadmeadows via a new shared path running parallel to the Craigieburn rail line at Pascoe Vale.
- Support greater use of the Moonee Ponds Creek corridor as a recreational cycling place for Glenroy residents by developing new access paths between Glenroy Activity Centre and the Moonee Ponds Creek Trail.

To achieve these objectives Council proposes projects totalling an **estimated \$4.37 million** as outlined below.

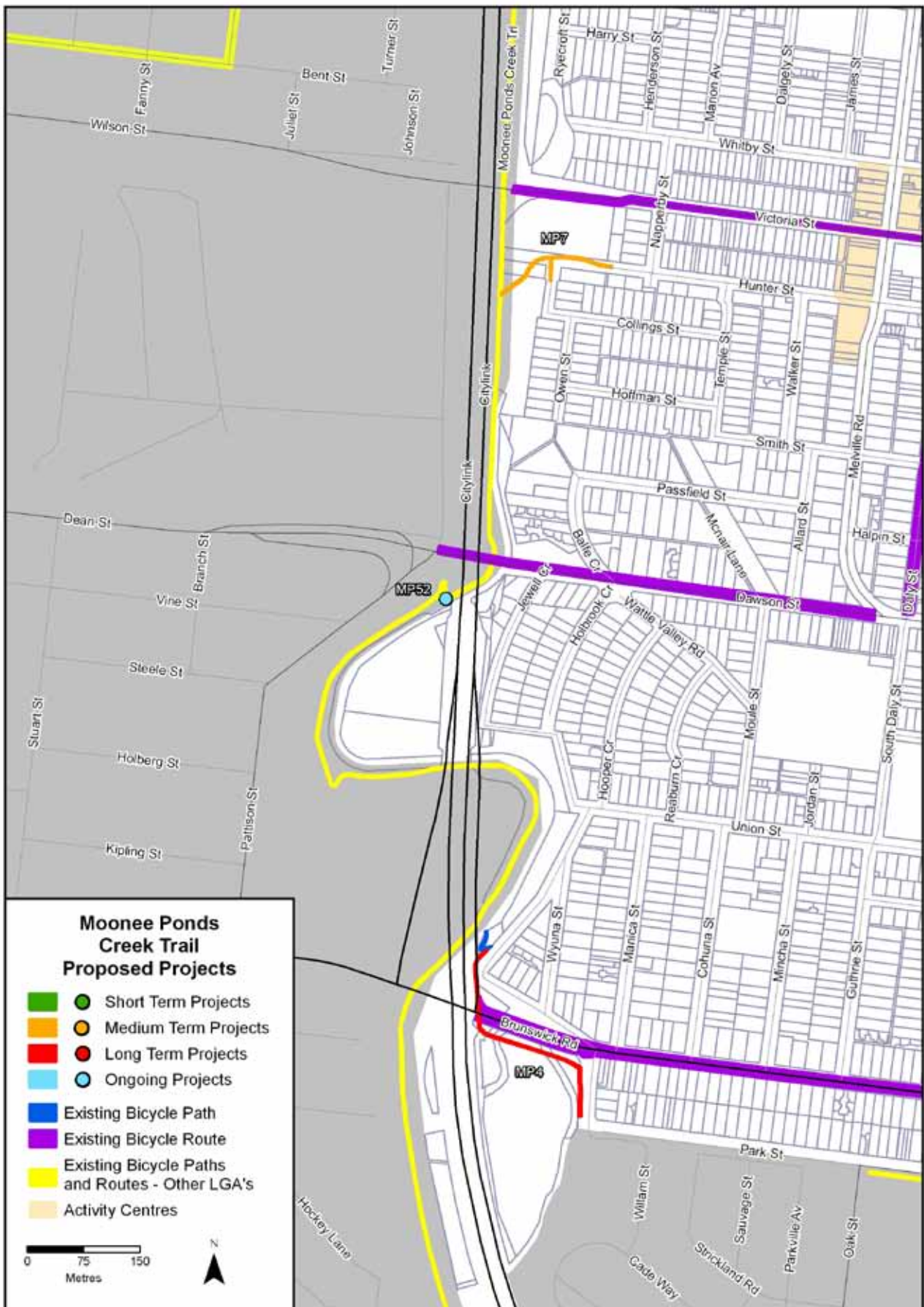
Advocacy actions

Project ID	Project Description	Estimated Cost (\$,000s)	Estimated Staff Time cost (staff days)	Responsibility
MP50	Advocate for VicTrack to allow cyclist access to an existing path running from Moonee Ponds Creek Path to North Melbourne railway station via the North Melbourne rail yards. This link improves connections between the CBD and the Moonee Ponds Creek Trail.	N/A	5	Councillors, Transport Team
MP51	Advocate for construction of a wide (3.0m or greater) shared path ramp between the Moonee Ponds Creek Trail and the Capital City Trail, running between Flemington Bridge Railway Station and Racecourse Road, Flemington.	N/A	5	Councillors, Transport Team
MP52	Encourage Moonee Valley City Council to upgrade the Moonee Ponds Creek Trail and eliminate a blind corner and steep gradient change near Dean Street (Dawson Street) – immediately south of Moonee Valley Racecourse.	N/A	1	Councillors, Transport Team
MP53	Advocate for Moonee Valley City Council to construct a path on the western side of the Craigieburn railway line, near Strathmore Secondary College, to link Moonee Ponds Creek Trail to Pascoe Avenue. This creates an access route between the Craigieburn Express route and back streets in Essendon and Strathmore that follow the railway further south.	N/A	10	Councillors, Transport Team
MP54	Encourage Moonee Valley City Council to construct an access path from the Moonee Ponds Creek Trail to Woodlands Road-Renyard Street, via Cross Keys Reserve. This path will improve access to the Moonee Ponds Creek Trail for residents of Essendon, Strathmore and Pascoe Vale.	N/A	10	Councillors, Transport Team

Moonee Ponds Creek Trail – Whole Trail

Project ID	Project Description	Estimated Cost (\$,000s)	Time scale	Eligible for External Funding?
MP34	<p>Work with the City of Moonee Valley to install pedestrian and cyclist way-finding signs along the Moonee Ponds Creek Trail.</p> <p>These signs identify nearby roads, low gradient routes to nearby places of interest and bypass routes for sections of the path subject to flooding.</p>	10	Short	Parks Victoria – Metro Trail Network
MP35	<p>As part of its broader bicycle signage strategy, Council will install shared path code of conduct signs along the Moonee Ponds Creek Trail (Western Ring Road to ARTC Railway line), which will encourage:</p> <p>Cyclists to ring their bells;</p> <p>Cyclists to slow down near groups of pedestrians;</p> <p>Dog walkers to keep their pet under control.</p>	5	Short	Parks Victoria – Metro Trail Network

Moonee Ponds Creek Trail at Brunswick West – Brunswick Road to Albion Street



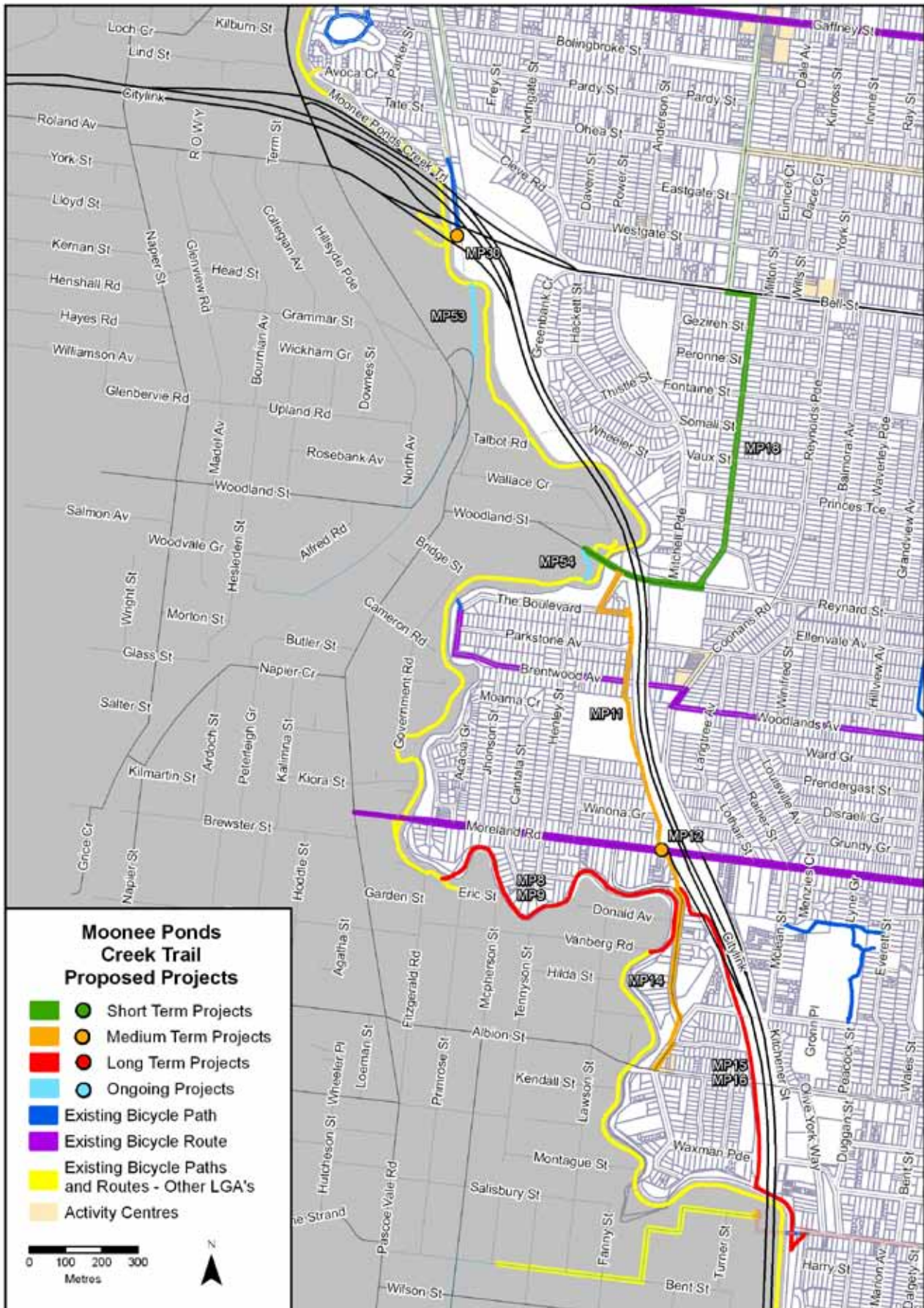
Medium priority actions

Project ID	Project Description	Estimated Cost (\$,000s)	Time scale	Eligible for External Funding?
MP7	<p>Design and construct a pedestrian bridge across the Moonee Ponds Creek between Dawson and Victoria Streets, with 3.0m wide x 200m long access paths to Hunter and Collings Streets, Brunswick West.</p> <p>This bridge will improve access between the Moonee Ponds Creek Trail and Brunswick West.</p>	620	Medium	SmartRoads support route

Long term projects

Project ID	Project Description	Estimated Cost (\$,000s)	Time scale	Eligible for External Funding?
MP4	<p>Secure land access and construct a 500m long x 3.0m wide concrete shared path between the Moonee Ponds Creek Trail (Union St bridge) and Park Street.</p> <p>The path is to run under the Citylink (Brunswick Road / Ormand Road) overpass on the east bank of Moonee Ponds Creek– then via the Reggio Calabria Club to Park Street.</p> <p>The path provides a low gradient access route to the Moonee Ponds Creek Trail for residents of Brunswick South West and the former Commonwealth Games Village in Parkville.</p> <p>The route is likely to require retaining walls and fencing near CityLink.</p>	360	Long	SmartRoads

Moonee Ponds Creek Trail at Pascoe Vale – Albion Street to Oak Park Sports Centre



Highest priority actions

Project ID	Project Description	Estimated Cost (\$,000s)	Time scale	Eligible for External Funding?
MP18	Install direction signs and pram ramps along Lemnos Avenue and Gallipoli Parade, Pascoe Vale, to create a backstreet link between Merri Creek Trail (Renyard Street bridge) and the Glenroy to Coburg east-west link (Cumberland Road).	10	Short	

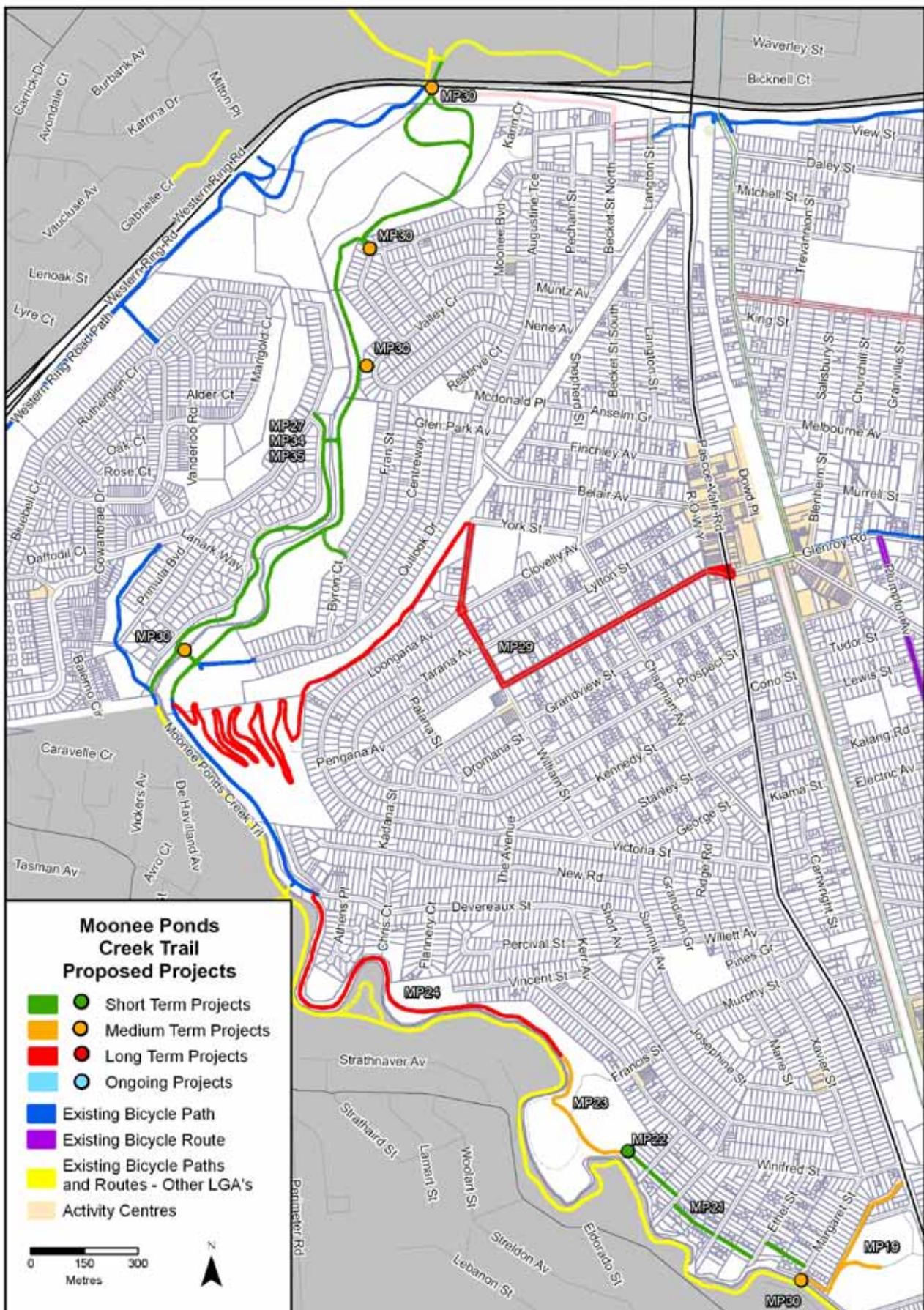
Medium priority actions

Project ID	Project Description	Estimated Cost (\$,000s)	Time scale	Eligible for External Funding?
MP11	Construct 450m x 3.0m wide concrete paths across Morris Reserve near CityLink, to Moreland Road and install direction signs on backstreet roads (Turnbull Drive, The Boulevard, Wentworth Avenue) to create Moonee Ponds Express – Stage 1A.	120	Medium	
MP12	Install pedestrian operated signals at Moreland Road at the existing traffic lights at the Moreland Road-CityLink off ramp	200	Medium	
MP14	Secure land access and construct a 100m long x 3.0m wide shared path linking Moreland Road and Hopetoun Avenue. (Moonee Ponds Express – Stage 1B)	26	Medium	

Long term projects

Project ID	Project Description	Estimated Cost (\$,000s)	Time scale	Eligible for External Funding?
MP8	Working with the City of Moonee Valley, design a path within the Moonee Ponds Creek Corridor to replace the on-road link along Vanberg and Primrose Streets, Essendon. This route is likely to require a 1km long boardwalk on the eastern bank of the creek and to access bridges two bridges to link this section of path to existing sections on the Western bank.	80	Long	SmartRoads support route
MP9	Construct two bridges, a 3.0m wide x 1 km shared path, a 300m-long boardwalk, and safety fencing, to relocate the Moonee Ponds Creek Trail within the open space corridor (near Vanberg Street).	1,815	Long	SmartRoads support route
MP15	Identify the preferred alignment and land access requirements to construct a 3.0m shared path between Moreland Road and Hope Street, as close to CityLink as practical (Moonee Ponds Express – Stage 2).	50	Long	
MP16	Construct a 3.0m wide x 1.5km concrete shared path, with associated safety fencing and public lighting, running from Moreland Road and Hope Street via the route identified in project M15 on the eastern bank of Moonee Ponds Creek.	1,071	Long	

Moonee Ponds Creek Trail - Oak Park Precinct



Highest priority actions

Project ID	Project Description	Estimated Cost (\$,000s)	Time scale	Eligible for External Funding?
MP22	Remove the turnstile at the end of the Sylvester Street right of way, which is currently preventing cyclist access to John Pascoe Fawkner Reserve (Oak Park Sports link).	1	Short	
MP21	Resurface right-of-way laneways, install pram ramps and public lighting between Margaret, Ethel, Gregory, John and Sylvester Streets, for use as a shared path. (Oak Park Sports link). The total length of the pathway is 600m.	158	Short	

Medium priority actions

Project ID	Project Description	Estimated Cost (\$,000s)	Time scale	Eligible for External Funding?
MP19	Design and construct 3.0m wide concrete paths through Oak Park Sports Centre (totalling 700m). Paths are to link the bridge across Moonee Ponds Creek at the end of Margaret Street, the swimming pool, pedestrian lights near Douglas Street and the Pascoe Vale Road, Winifred Street lights (Oak Park Sports link).	250	Medium	
MP23	Design and construct 3.0m wide x 300m long concrete paths across John Pascoe Fawkner Reserve, linking the Sylvester Street right-of-way, the tennis centre near Francis Street and the existing pedestrian bridge to the Moonee Ponds Creek Trail.	94	Medium	
MP30	Install direction signs along back streets in Glenroy to assist cyclists to navigate between Glenroy Activity Centre and the Moonee Ponds Creek Trail.	5	Medium	

Long term projects

Project ID	Project Description	Estimated Cost (\$,000s)	Time scale	Eligible for External Funding?
MP24	Identify land access requirements, design and construct a 1 km long x 3.0m wide concrete shared path that links John Pascoe Fawkner Reserve, the park at the end of Vincent Street and Athens Place and the shared path north of Devereaux Street and Kingsford Smith Ulm Reserve.	600	Long	
MP27	Design and construct an upgraded path to replace the Moonee Ponds Creek Trail between the freight rail bridge and the Western Ring Road. The upgraded path will be a 3.0 km x 3.0m wide concrete shared path, outside the flood zone and with reduced gradients.	1,000	Long	
MP29	Identify land access requirements, design and construct a 1.5 km long x 3.0m wide concrete path linking back streets in Glenroy with the Moonee Ponds Creek path. The path needs to ascend to a vertical height of 30m and be designed to meet Austroads 14 gradient requirements.	800	Long	